

What do the alarm signals mean?



www.innohome.com

The Intelligent Heat Sensor is above the range:
the alarm signal is a high-tone beep.

The Control Unit is behind the range:
the alarm signal rings similarly to a telephone.

Sound	Meaning	Course of Action
Intelligent Heat Sensor: a short beep every few seconds (pre-alarm signal)	The pre-alarm signal is emitted before the range is turned off.	If the alarm triggers during a normal cooking situation, press the Heat Sensor cover once during the pre-alarm sound.
Intelligent Heat Sensor: repetitive fast 'beep, beep, beep' (actual alarm)	The Stove Guard has turned the range off.	First turn all range knobs off, then press the Intelligent Heat Sensor cover once. (In ranges that are operated by touch just press the Intelligent Heat Sensor cover once.)
Control Unit: a short buzzing sound at 5 second intervals	The Stove Guard has turned the range off some time ago.	First turn all range knobs off, then press the Intelligent Heat Sensor cover once. (In ranges that are operated by touch just press the Intelligent Heat Sensor cover once.) If you cannot turn the range back on, see question 1 in FAQ, chapter 2 in the reference manual.
Control Unit: a continuous buzzing sound	The range is too hot to be turned back on.	Wait until the range cools down to a safe level. The range can be turned on again when the Control Unit starts to emit a short ring every 5 seconds (see row above).
Control Unit: a short ring and a long ring, alternating at 5 second intervals	The range has been turned off due to a temporary error or a fault in the system (automatic fault diagnosis).	First turn all range knobs off, then press the Heat Sensor cover once. (In ranges that are operated by touch just press the Sensor cover once.) If this does not silence the alarm, see question 3 in FAQ, chapter 2 in the reference manual.
Intelligent Heat Sensor (and the Control Unit): a beep/ring once a minute	The Heat Sensor has a low battery.	The Heat Sensor needs to be replaced (see the reference manual chapter 4). Pressing the Heat Sensor cover delays the alarm for 12 hours. <i>When the battery has run out the range can only be used for 5 minutes at a time.</i>



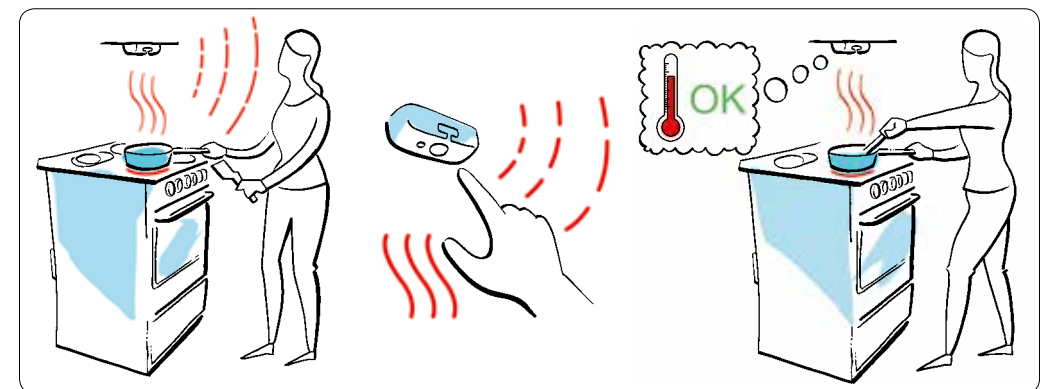
STOVE GUARD SGK430 GUIDE FOR USER

The Stove Guard observes changing range temperatures. If the Stove Guard detects a risk situation, it signals an alarm and turns the range off.

When first using the Stove Guard

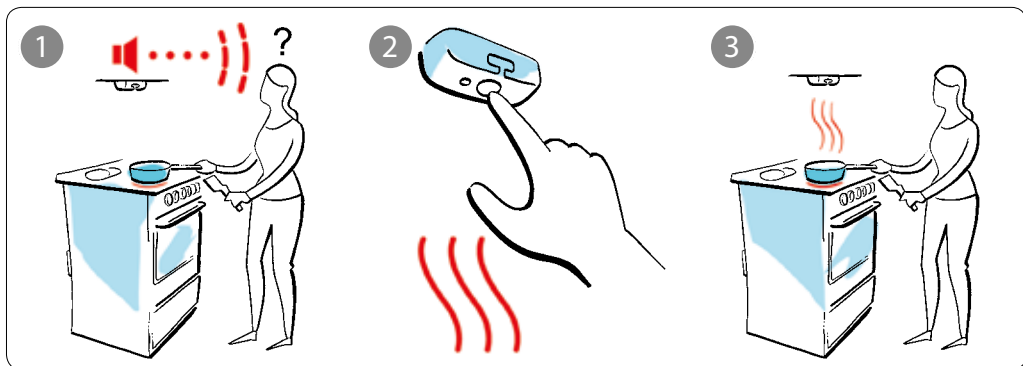
The Stove Guard is ready for use immediately after installation. However, at the beginning, it may start to signal during normal cooking. This is because the Stove Guard gradually adjusts to different cooking styles.

When the Stove Guard settings are ready (usually after around 1 – 3 alarms), the alarms will no longer trigger during normal cooking.



Pressing the Intelligent Heat Sensor cover during the pre-alarm signal (● ● ● ●) stops the alarm and the Stove Guard adjusts its sensitivity automatically.

Using Stove Guard



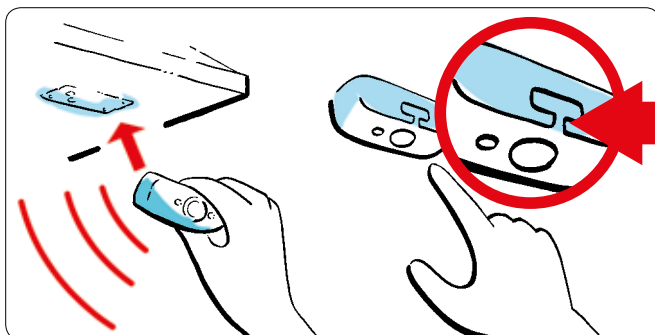
If the Stove Guard starts to signal during cooking, press the Heat Sensor cover once.



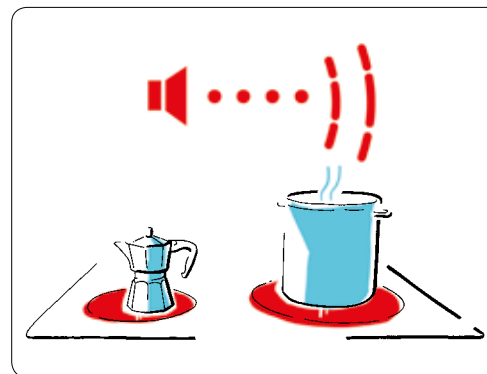
If the Stove Guard has turned the range off, first turn all range knobs off, then press the Heat Sensor cover once. (In ranges that are operated by touch, just press the Sensor cover once.) After this the range can be used normally.

Removing the Heat Sensor from the mounting plate triggers an alarm and the range is turned off. To use the range, return the Heat Sensor back to its place.

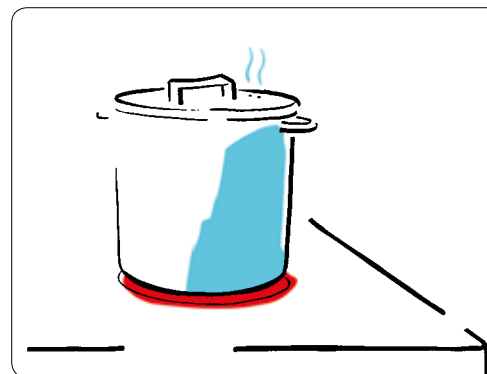
The Heat Sensor should be placed on the mounting plate so that the LED light on the side of the Sensor faces towards the user. Make sure that the Sensor is fitted tightly on to the mounting plate.



Good to know



- Using a pot much smaller than a hotplate can trigger an alarm.



- It is recommended to use a lid when possible.
- For more information see FAQ question 5 (in the reference manual).

! The Stove Guard does not cover all possible hazardous situations but significantly increases the safety of a range. Never leave the range unattended on purpose.

! Do not leave the range unattended after resetting the pre-alarm signal.

! Ensure a minimum distance of 6" (15cm) between you and an Intelligent Heat Sensor in full alarm, due to risk of damage to hearing.

Maintenance: Clean the Intelligent Heat Sensor by wiping it with a cloth dampened with a mixture of household detergent and water (only use a cloth that does not leave fibres). Due to the automatic fault diagnosis, the Stove Guard does not need other maintenance or testing.